



SOBHA SEAHAVEN

SOBHA
REALTY



An architectural rendering of the SeaHaven by Sobha development in Dubai Harbour. The image shows a modern, curved building with a white, ribbed facade and a large glass section on the ground floor. The ground floor features a Starbucks Coffee shop and a Nobu restaurant. People are walking on the sidewalk in front of the building. The text "SeaHaven by Sobha" is overlaid in large white letters, and "DUBAI HARBOUR" is written in large white letters to the right. Below the main title, the tagline "Wake Up to Waterfront Living" is displayed.

SeaHaven by Sobha

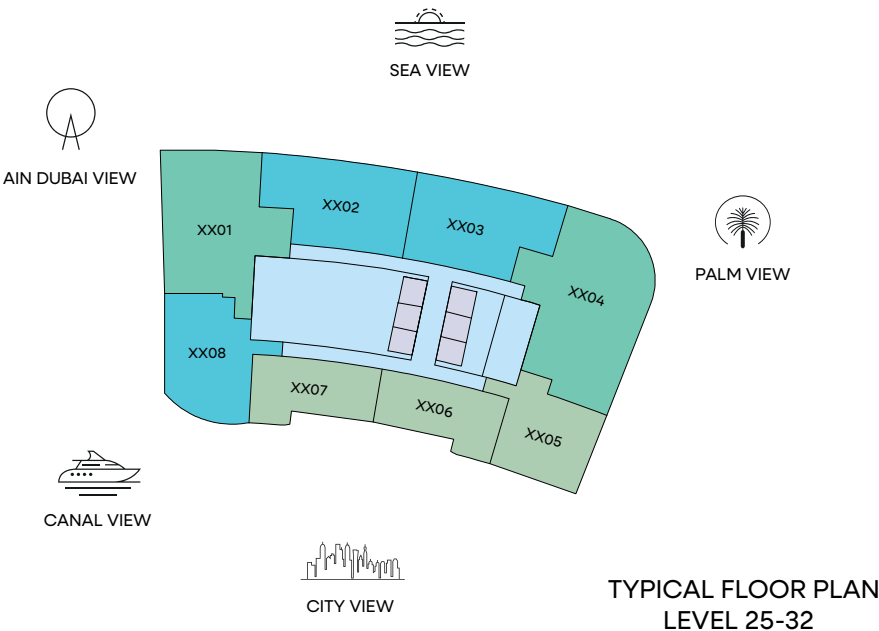
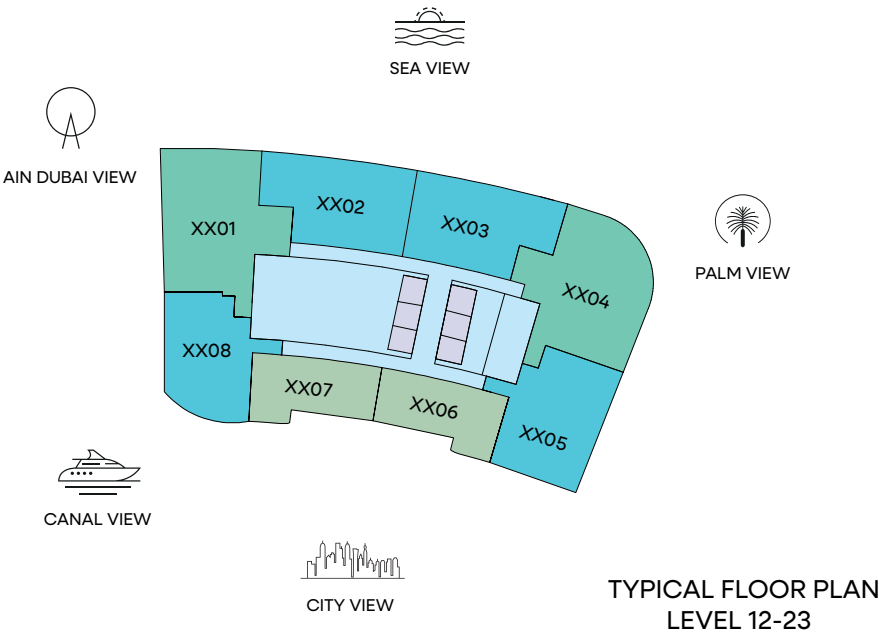
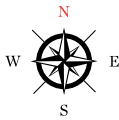
Wake Up to Waterfront Living

SeaHaven offers an exclusive escape by the water. With panoramic sea views, high-end finishes, and open-plan layouts, this is coastal luxury redefined.

Perfect for those who seek peace, beauty, and contemporary design, all wrapped in one address.

FLOOR PLAN LAYOUT

TOWER A



- 1 BED UNIT
- 2 BED UNIT
- 3 BED UNIT
- LOBBIES, CORRIDORS & STAIRS
- LIFTS

Disclaimer: 1. All dimensions are in metric, measured to wall finishes. 2. All materials, dimensions & drawings are approximate. 3. Information is subject to change without notice, at developer's absolute discretion. 4. Actual area may vary from the stated area. 5. Drawing are not to scale. 6. All images used are for illustrative purpose only and do not represent the actual size, features, specifications, fittings and furnishings. 7. The developer reserves the right to make revisions/ alterations, at its absolute discretion, without any liability whatsoever.

3 BEDROOM APARTMENT

TYPE A (with maid room and powder room + balcony)

TOTAL SALEABLE AREA

SUITE = 1,852.47 SQ.FT.

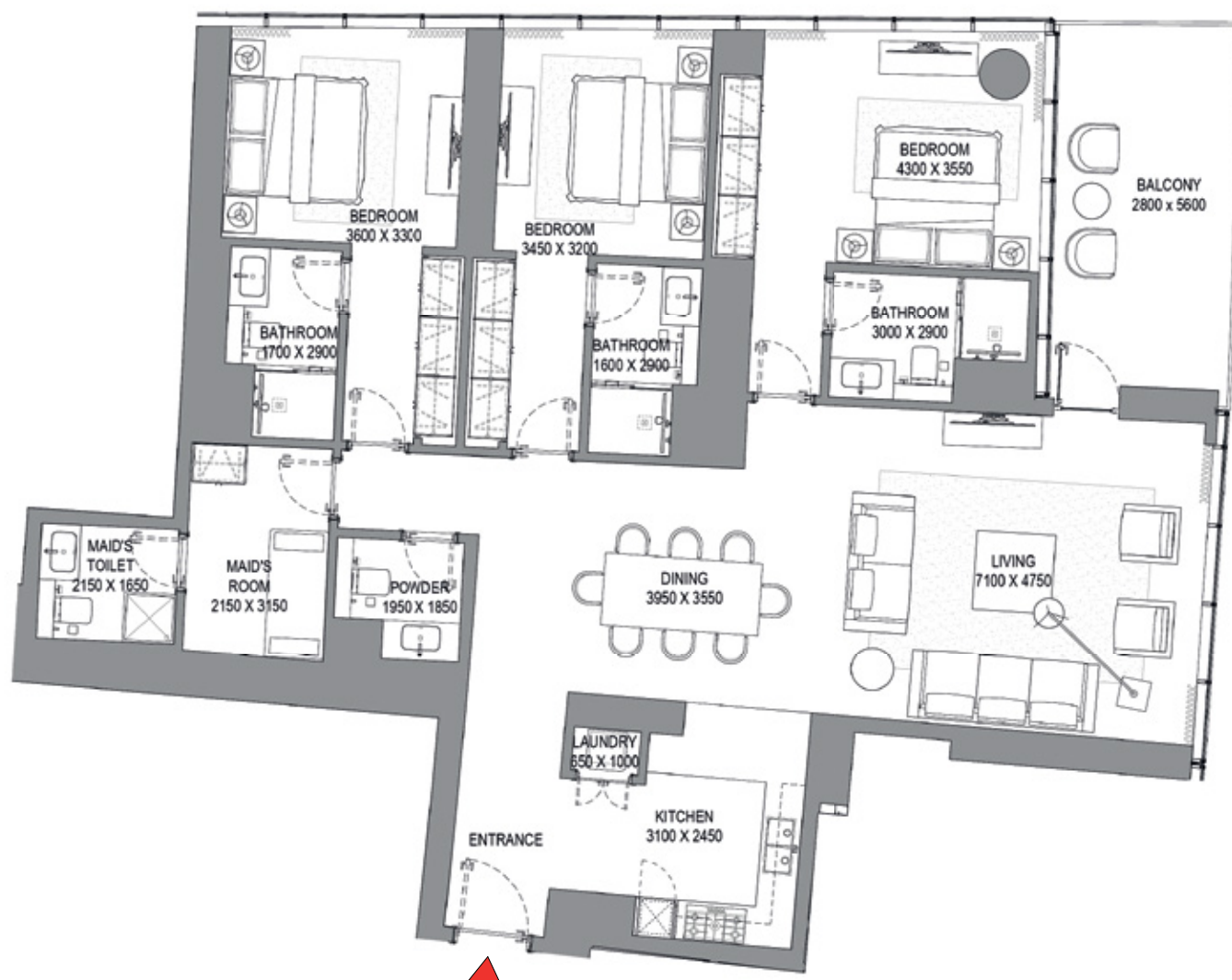
BALCONY = 176.53 SQ.FT.

TOTAL = 2,029.00 SQ.FT.



TYPICAL FLOOR PLAN
LEVEL 12-23 & 25-32

UNIT



List of unit numbers with this unit plan:

VIEWS

Blue waters, Ain Dubai, Palm Jumeirah, Harbour, JBR Beach, Marina, Sea, Marina Skyline, Skydive

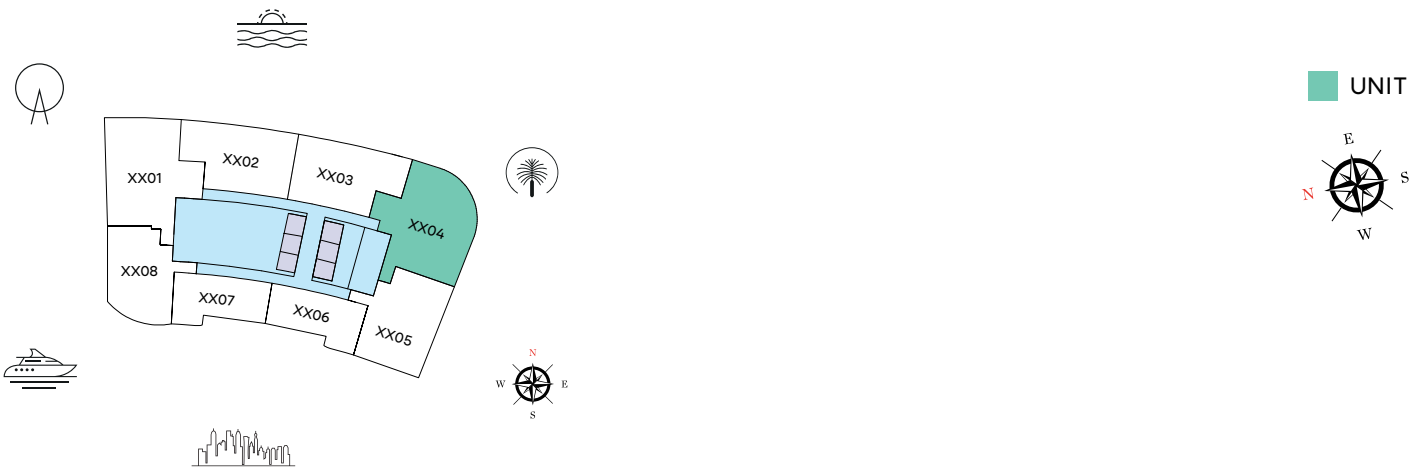
1201, 1301, 1401, 1501, 1601, 1701, 1801, 1901, 2001, 2101, 2201, 2301, 2501, 2601, 2701, 2801, 2901, 3001, 3101, 3201

Disclaimer: 1. All dimensions are in metric, measured to wall finishes. 2. All materials, dimensions & drawings are approximate. 3. Information is subject to change without notice, at developer's absolute discretion. 4. Actual area may vary from the stated area. 5. Drawing are not to scale. 6. All images used are for illustrative purpose only and do not represent the actual size, features, specifications, fittings and furnishings. 7. The developer reserves the right to make revisions/ alterations, at its absolute discretion, without any liability whatsoever.

3 BEDROOM APARTMENT

TYPE B (with maid room and powder room + balcony)

TOTAL SALEABLE AREA
SUITE = 1,963.55 SQ.FT.
BALCONY = 119.16 SQ.FT.
TOTAL = 2,082.71 SQ.FT.



TYPICAL FLOOR PLAN
LEVEL 12-23



List of unit numbers with this unit plan:

VIEWS

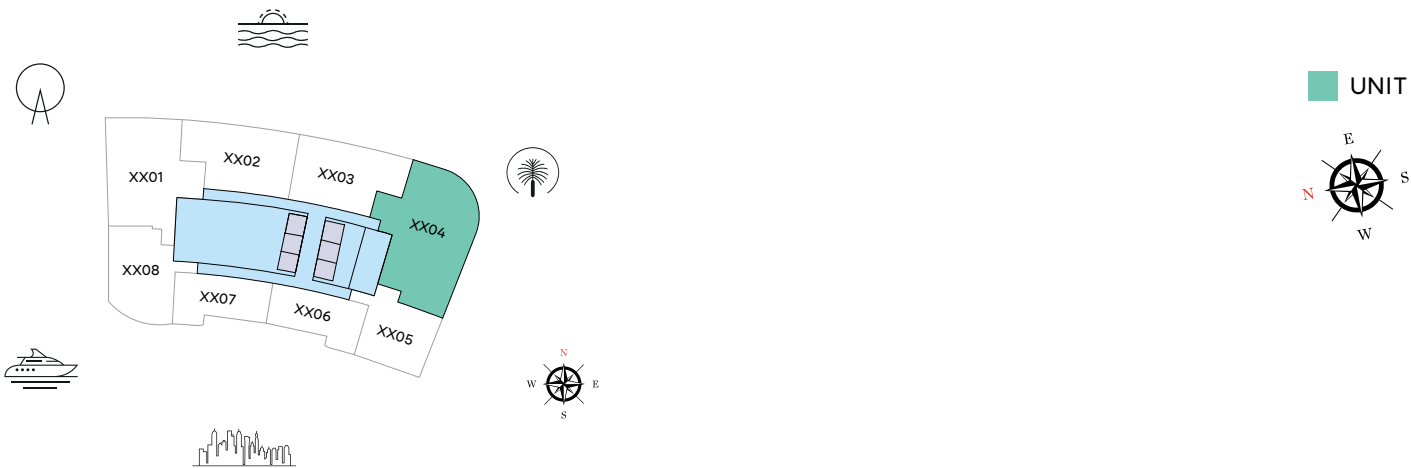
Palm Jumeirah, Harbour, Sea, Skydive
1204, 1304, 1404, 1504, 1604, 1704, 1804, 1904, 2004, 2104, 2204, 2304

Disclaimer: 1. All dimensions are in metric, measured to wall finishes. 2. All materials, dimensions & drawings are approximate. 3. Information is subject to change without notice, at developer's absolute discretion. 4. Actual area may vary from the stated area. 5. Drawing are not to scale. 6. All images used are for illustrative purpose only and do not represent the actual size, features, specifications, fittings and furnishings. 7. The developer reserves the right to make revisions/ alterations, at its absolute discretion, without any liability whatsoever.

3 BEDROOM APARTMENT

TYPE C (with maid room and powder room + balcony)

TOTAL SALEABLE AREA
SUITE = 2,338.89 SQ.FT.
BALCONY = 119.16 SQ.FT.
TOTAL = 2,458.05 SQ.FT.



TYPICAL FLOOR PLAN
LEVEL 25-32



List of unit numbers with this unit plan:

VIEWS

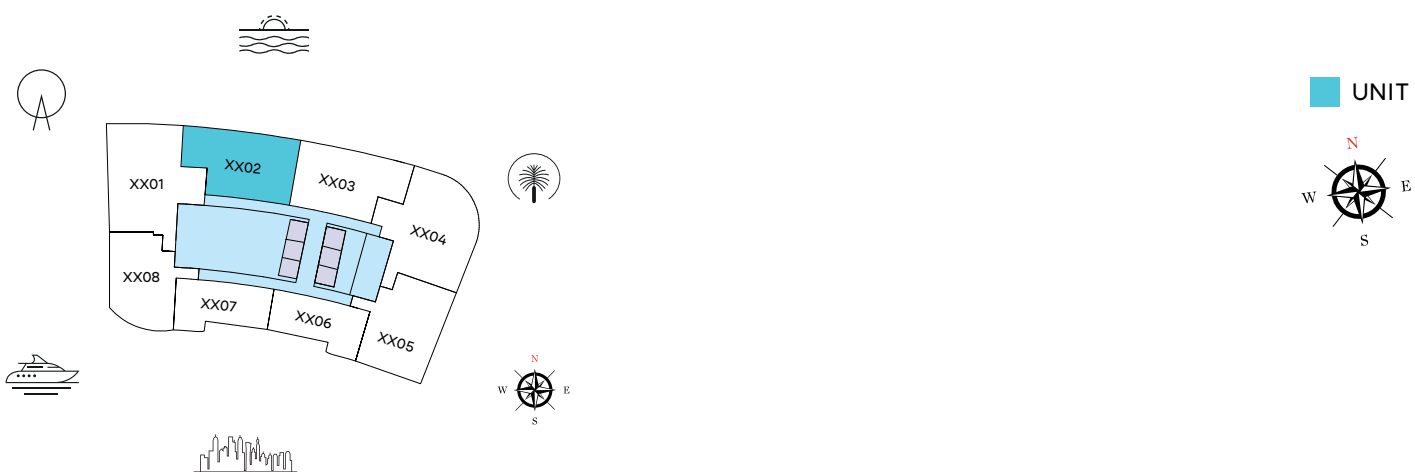
Palm Jumeirah, Harbour, Sea, Skydive
2504, 2604, 2704, 2804, 2904, 3004, 3104, 3204

Disclaimer: 1. All dimensions are in metric, measured to wall finishes. 2. All materials, dimensions & drawings are approximate. 3. Information is subject to change without notice, at developer's absolute discretion. 4. Actual area may vary from the stated area. 5. Drawing are not to scale. 6. All images used are for illustrative purpose only and do not represent the actual size, features, specifications, fittings and furnishings. 7. The developer reserves the right to make revisions/ alterations, at its absolute discretion, without any liability whatsoever.

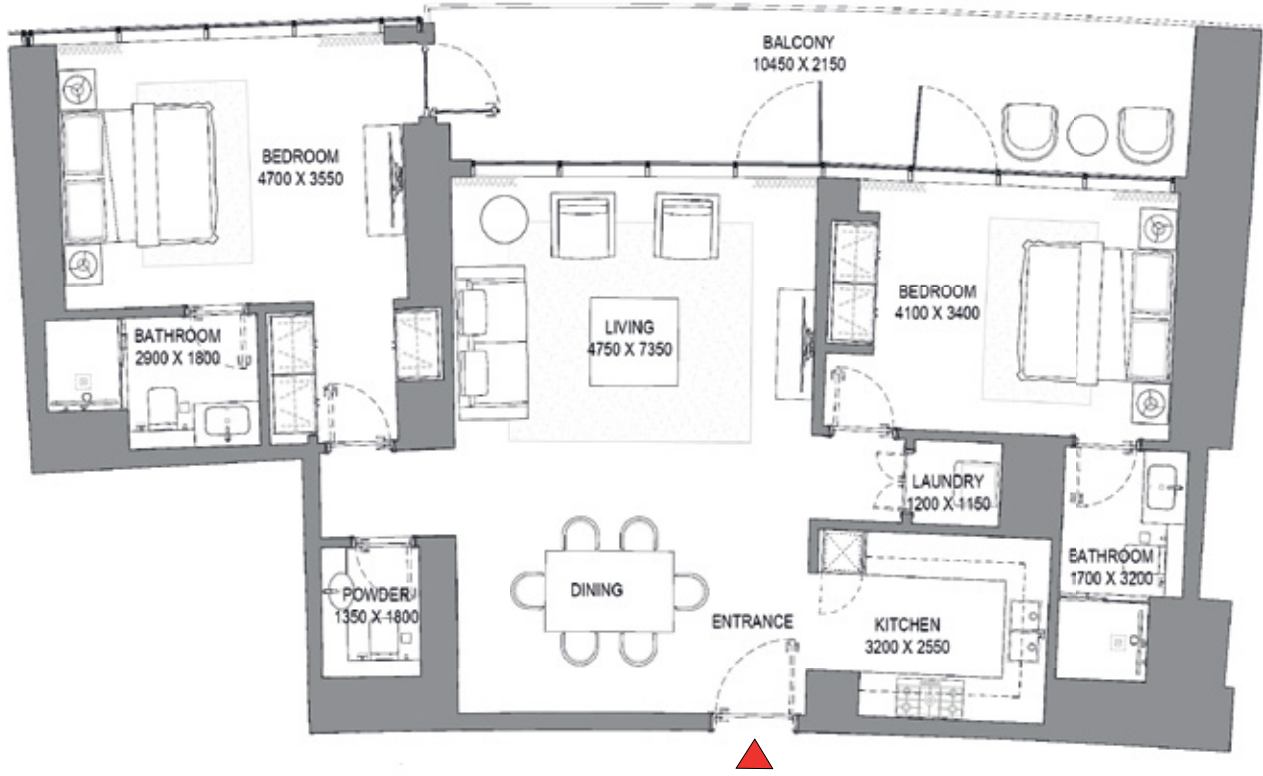
2 BEDROOM APARTMENT

TYPE A (with powder room + balcony)

TOTAL SALEABLE AREA
SUITE = 1,225.79 SQ.FT.
BALCONY = 230.89 SQ.FT.
TOTAL = 1,456.68 SQ.FT.



TYPICAL FLOOR PLAN
LEVEL 12-23 & 25-32



List of unit numbers with this unit plan:

VIEWS

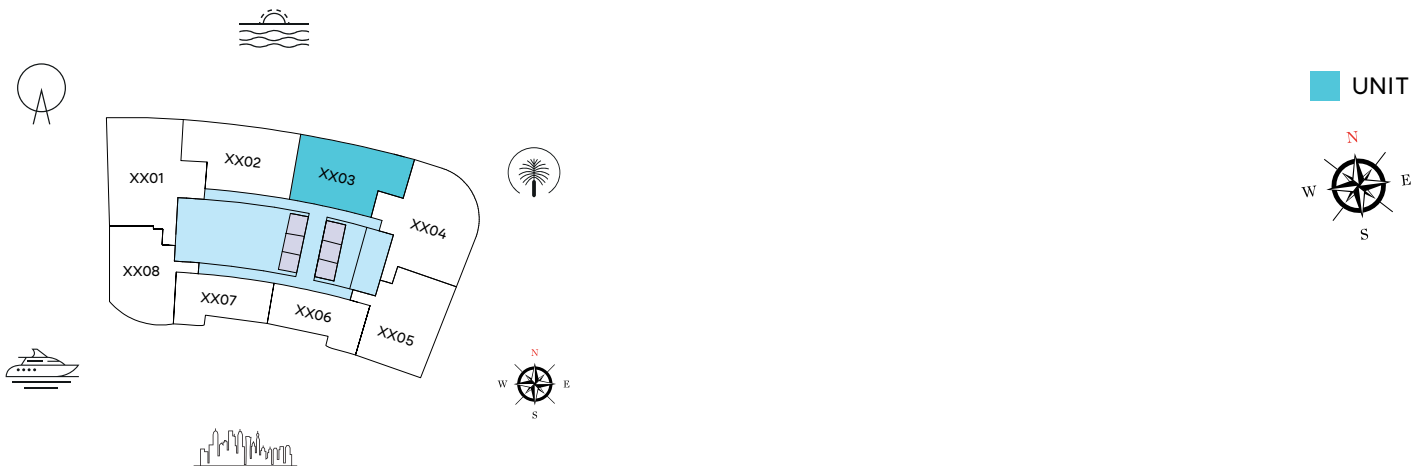
Blue waters, Ain Dubai, Palm Jumeirah, Harbour, Sea, Skydive
1202, 1302, 1402, 1502, 1602, 1702, 1802, 1902, 2002, 2102, 2202, 2302, 2502, 2602, 2702, 2802, 2902, 3002, 3102, 3202

Disclaimer: 1. All dimensions are in metric, measured to wall finishes. 2. All materials, dimensions & drawings are approximate. 3. Information is subject to change without notice, at developer's absolute discretion. 4. Actual area may vary from the stated area. 5. Drawing are not to scale. 6. All images used are for illustrative purpose only and do not represent the actual size, features, specifications, fittings and furnishings. 7. The developer reserves the right to make revisions/ alterations, at its absolute discretion, without any liability whatsoever.

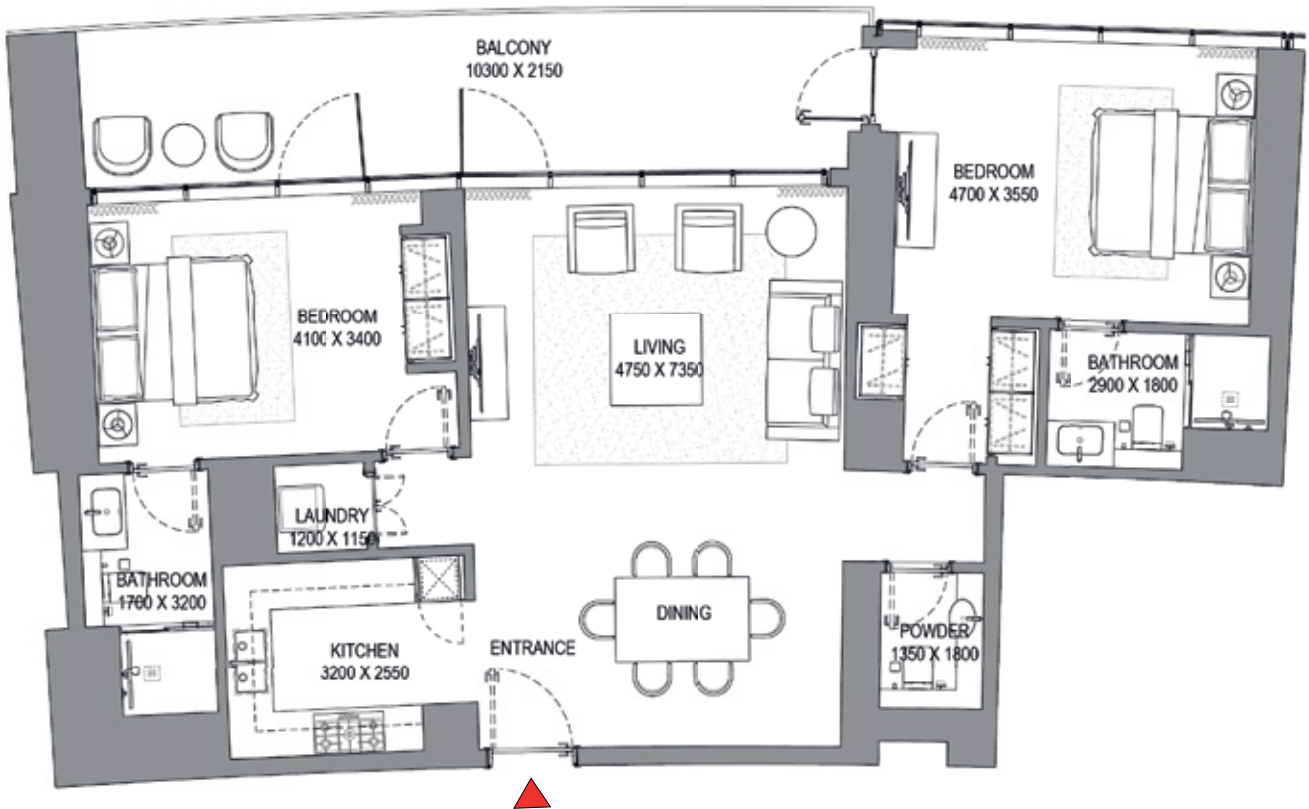
2 BEDROOM APARTMENT

TYPE B (with powder room + balcony)

TOTAL SALEABLE AREA
SUITE RANGE = 1,213.95 - 1,214.28 SQ.FT.
BALCONY RANGE = 230.02 - 230.35 SQ.FT.
TOTAL = 1,444.30 SQ.FT.



TYPICAL FLOOR PLAN
LEVEL 12-23 & 25-32



List of unit numbers with this unit plan:

VIEWS

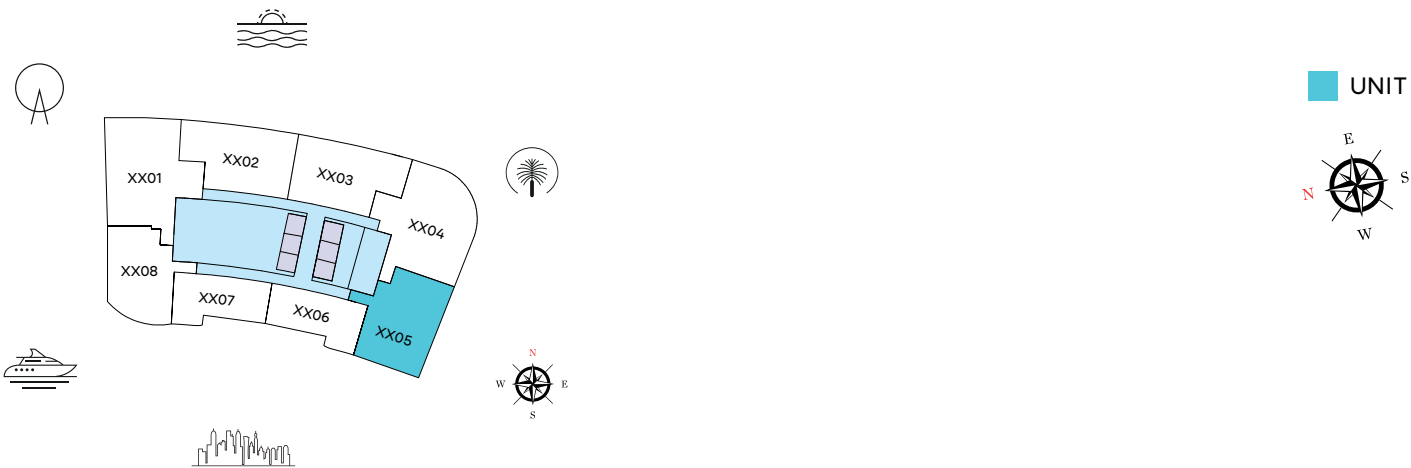
Palm Jumeirah, Harbour, Sea, Skydive
1203, 1303, 1403, 1503, 1603, 1703, 1803, 1903, 2003, 2103, 2203, 2303, 2503, 2603, 2703, 2803, 2903, 3003, 3103, 3203

Disclaimer: 1. All dimensions are in metric, measured to wall finishes. 2. All materials, dimensions & drawings are approximate. 3. Information is subject to change without notice, at developer's absolute discretion. 4. Actual area may vary from the stated area. 5. Drawing are not to scale. 6. All images used are for illustrative purpose only and do not represent the actual size, features, specifications, fittings and furnishings. 7. The developer reserves the right to make revisions/ alterations, at its absolute discretion, without any liability whatsoever.

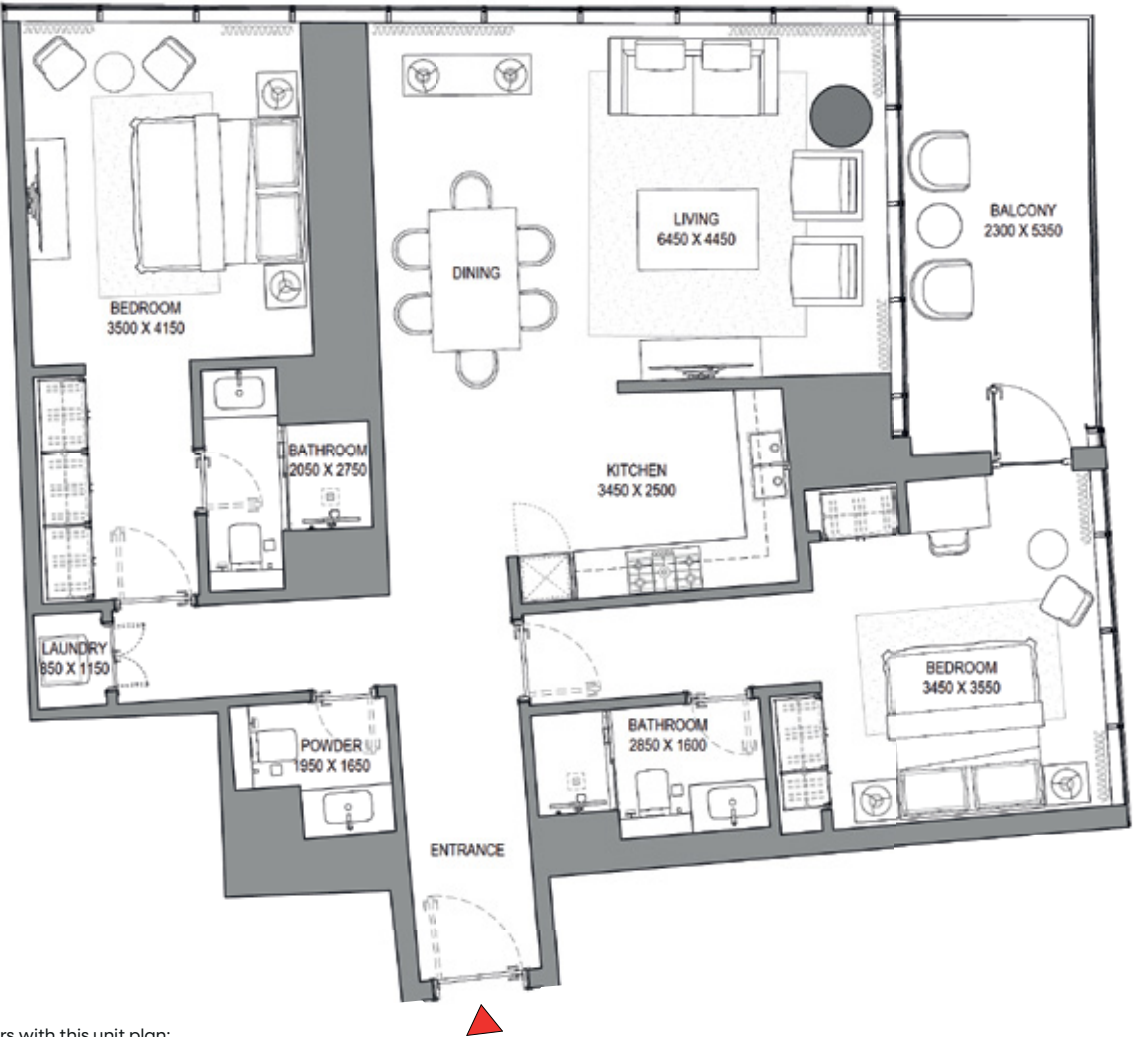
2 BEDROOM APARTMENT

TYPE C (with powder room + balcony)

TOTAL SALEABLE AREA
SUITE = 1,338.28 SQ.FT.
BALCONY = 136.49 SQ.FT.
TOTAL = 1,474.77 SQ.FT.



TYPICAL FLOOR PLAN
LEVEL 12-23



List of unit numbers with this unit plan:

VIEWS

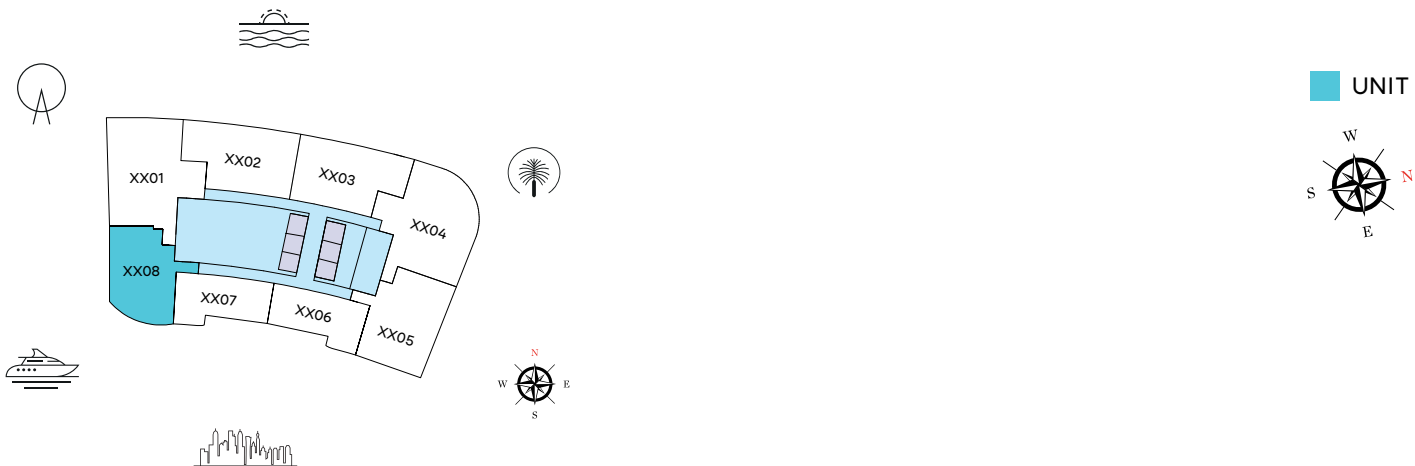
Marina, Marina Skyline
1205, 1305, 1405, 1505, 1605, 1705, 1805, 1905, 2005, 2105, 2205, 2305

Disclaimer: 1. All dimensions are in metric, measured to wall finishes. 2. All materials, dimensions & drawings are approximate. 3. Information is subject to change without notice, at developer's absolute discretion. 4. Actual area may vary from the stated area. 5. Drawing are not to scale. 6. All images used are for illustrative purpose only and do not represent the actual size, features, specifications, fittings and furnishings. 7. The developer reserves the right to make revisions/ alterations, at its absolute discretion, without any liability whatsoever.

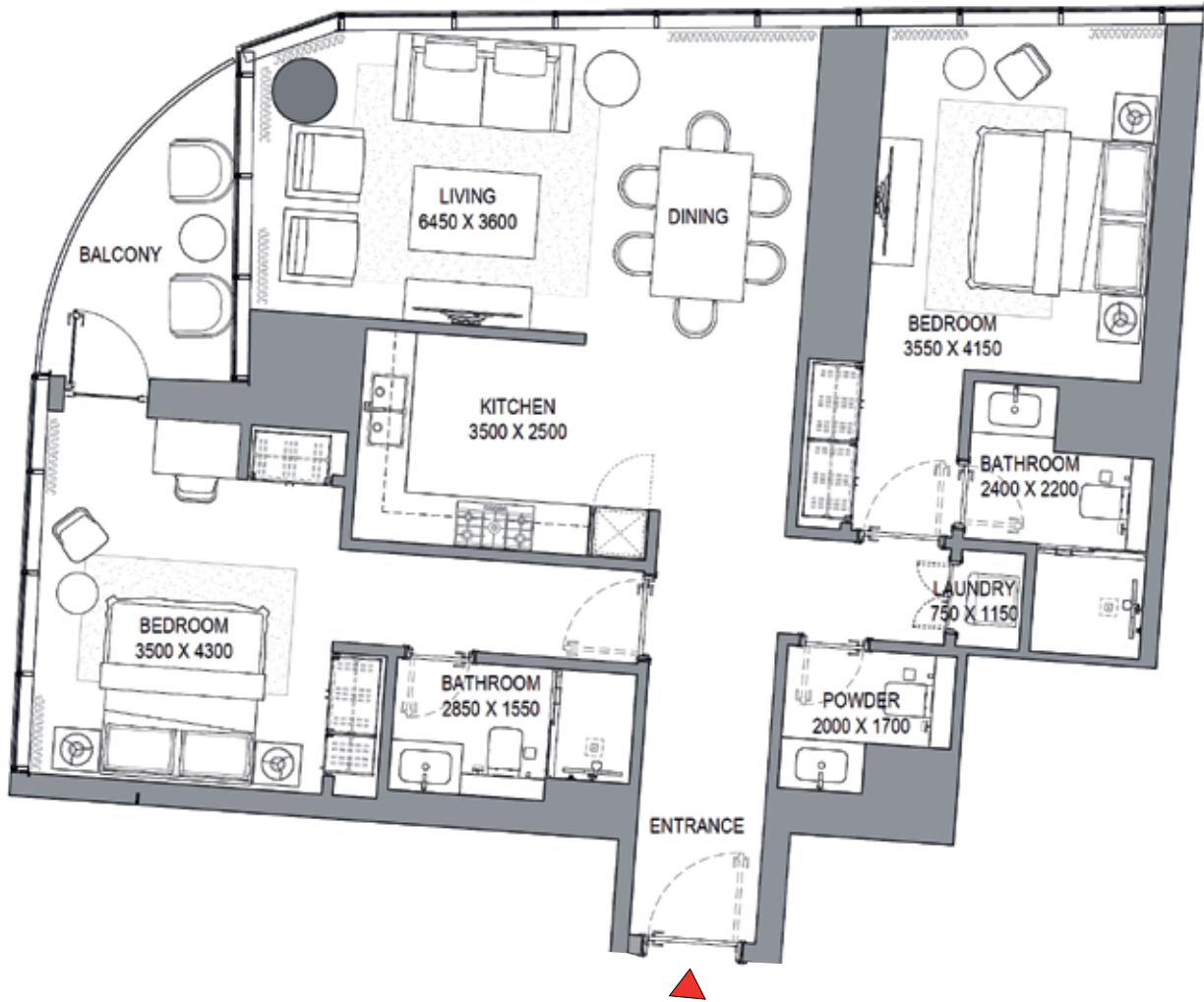
2 BEDROOM APARTMENT

TYPE D (with powder room + balcony)

TOTAL SALEABLE AREA
SUITE RANGE = 1,210.51 - 1,210.62 SQ.FT.
BALCONY RANGE = 70.93 - 71.04 SQ.FT.
TOTAL = 1,281.55 SQ.FT.



TYPICAL FLOOR PLAN
LEVEL 12-23 & 25-32



List of unit numbers with this unit plan:

VIEWS

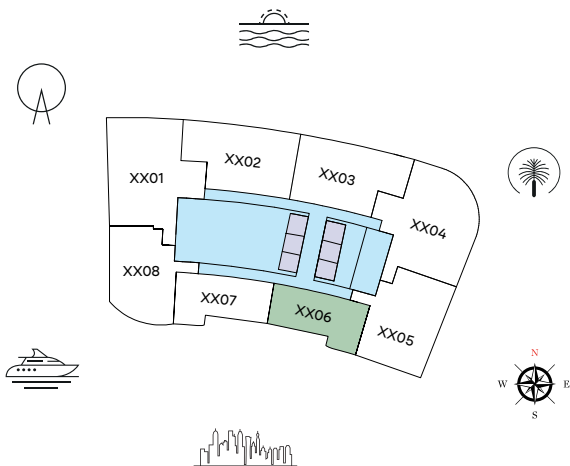
Blue waters, Ain Dubai, JBR Beach, Marina, Sea
1208, 1308, 1408, 1508, 1608, 1708, 1808, 1908, 2008, 2108, 2208, 2308, 2508, 2608, 2708, 2808, 2908, 3008, 3108, 3208

Disclaimer: 1. All dimensions are in metric, measured to wall finishes. 2. All materials, dimensions & drawings are approximate. 3. Information is subject to change without notice, at developer's absolute discretion. 4. Actual area may vary from the stated area. 5. Drawing are not to scale. 6. All images used are for illustrative purpose only and do not represent the actual size, features, specifications, fittings and furnishings. 7. The developer reserves the right to make revisions/ alterations, at its absolute discretion, without any liability whatsoever.

1 BEDROOM APARTMENT

TYPE A (with powder room + balcony)

TOTAL SALEABLE AREA
SUITE = 793.30 SQ.FT.
BALCONY = 68.67 SQ.FT.
TOTAL = 861.97 SQ.FT.



TYPICAL FLOOR PLAN
LEVEL 12-23 & 25-32



List of unit numbers with this unit plan:

VIEWS

Marina, Marina Skyline

1206, 1306, 1406, 1506, 1606, 1706, 1806, 1906, 2006, 2106, 2206, 2306, 2506, 2606, 2706, 2806, 2906, 3006, 3106, 3206

Disclaimer: 1. All dimensions are in metric, measured to wall finishes. 2. All materials, dimensions & drawings are approximate. 3. Information is subject to change without notice, at developer's absolute discretion. 4. Actual area may vary from the stated area. 5. Drawing are not to scale. 6. All images used are for illustrative purpose only and do not represent the actual size, features, specifications, fittings and furnishings. 7. The developer reserves the right to make revisions/ alterations, at its absolute discretion, without any liability whatsoever.

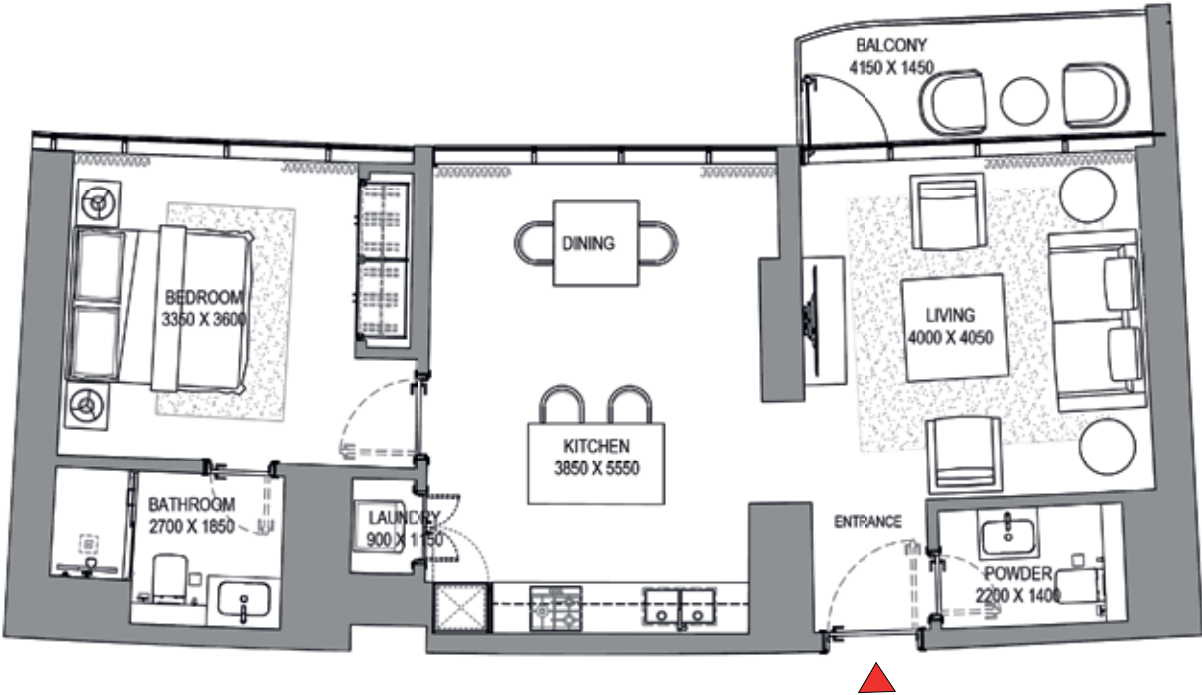
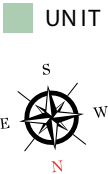
1 BEDROOM APARTMENT

TYPE B (with powder room + balcony)

TOTAL SALEABLE AREA
SUITE = 793.30 SQ.FT.
BALCONY = 67.38 SQ.FT.
TOTAL = 860.68 SQ.FT.



TYPICAL FLOOR PLAN
LEVEL 12-23 & 25-32



List of unit numbers with this unit plan:

VIEWS

Marina, Marina Skyline

1207, 1307, 1407, 1507, 1607, 1707, 1807, 1907, 2007, 2107, 2207, 2307, 2507, 2607, 2707, 2807, 2907, 3007, 3107, 3207

Disclaimer: 1. All dimensions are in metric, measured to wall finishes. 2. All materials, dimensions & drawings are approximate. 3. Information is subject to change without notice, at developer's absolute discretion. 4. Actual area may vary from the stated area. 5. Drawing are not to scale. 6. All images used are for illustrative purpose only and do not represent the actual size, features, specifications, fittings and furnishings. 7. The developer reserves the right to make revisions/ alterations, at its absolute discretion, without any liability whatsoever.

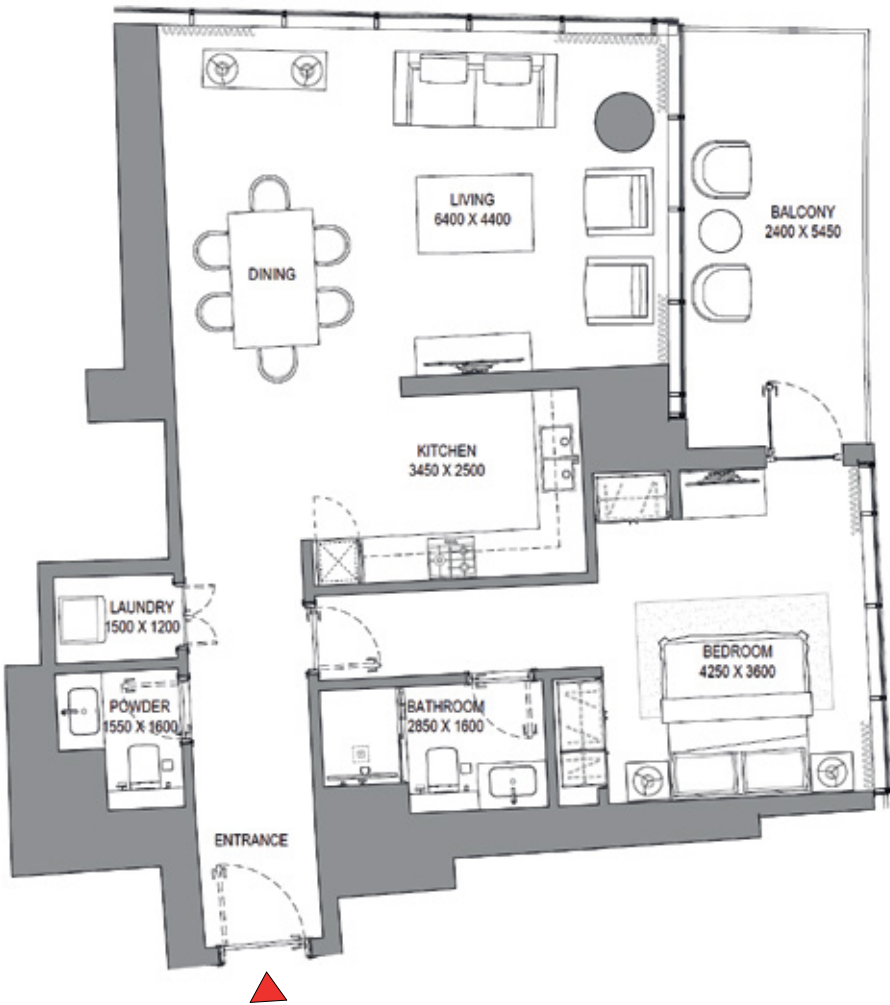
1 BEDROOM APARTMENT

TYPE C (with powder room + balcony)

TOTAL SALEABLE AREA
SUITE = 969.61 SQ.FT.
BALCONY = 136.49 SQ.FT.
TOTAL = 1,106.10 SQ.FT.



TYPICAL FLOOR PLAN
LEVEL 25-32



List of unit numbers with this unit plan:

VIEWS

Marina, Marina Skyline
2505, 2605, 2705, 2805, 2905, 3005, 3105, 3205

Disclaimer: 1. All dimensions are in metric, measured to wall finishes. 2. All materials, dimensions & drawings are approximate. 3. Information is subject to change without notice, at developer's absolute discretion. 4. Actual area may vary from the stated area. 5. Drawing are not to scale. 6. All images used are for illustrative purpose only and do not represent the actual size, features, specifications, fittings and furnishings. 7. The developer reserves the right to make revisions/ alterations, at its absolute discretion, without any liability whatsoever.



SOBHA SEAHAVEN



Office 144, City Centre Office Building,
Deira Port Saeed, Dubai, UAE,
P.O Box – 30817

CONTACT US
+971 50 266 2492
maddy@galahad.ae

www.galahad.ae